

UV HARMONIE JAZZ 2009/2010

NOM :

Prénom :

HARMONISEZ CETTE MELODIE A 5 SONS

Sur A & B (Thème lead + basse + 3 sons)

Sur C (écrire une nouvelle mélodie + basse + 3 sons)

A FMA7 AMIN7(b5) D7 GMIN7 BMIN7(b5) E7 AMIN7 CMIN7 F7 BbMA7 BbMIN7 Eb7

A7 DMIN7 GMIN7 C7 A7 D7 GMIN7 C7

GMIN7 C7 FMA7 Bb7 EbMIN7 Ab7

B DbMA7 BbMIN7 Eb7 Ab7 FMIN7 Bb7 EbMIN7 Ab7

DbMA7 BbMIN7 GMIN7(b5) C7 AMIN7(b5) D7 G7 C7

NOM :
Prénom :

Sur C écrire une nouvelle mélodie + basse + 3 sons

ⓐ FMA7 F#07 GMIN7 G#07 FMA7/A CMIN7 F7 BbMA7 Eb7

A musical staff for piano, consisting of a grand staff with a treble clef on the top staff and a bass clef on the bottom staff. The key signature has one flat (Bb). The staff is divided into four measures, corresponding to the chords listed above: FMA7, F#07, GMIN7, and G#07. The remaining two measures are empty.

AMIN7 DMIN7 GMIN7 C7 FMA7

A musical staff for piano, consisting of a grand staff with a treble clef on the top staff and a bass clef on the bottom staff. The key signature has one flat (Bb). The staff is divided into four measures, corresponding to the chords listed above: AMIN7, DMIN7, GMIN7, and C7. The remaining two measures are empty.

NOM :
Prénom :

ECRIRE UN THEME SUR CETTE GRILLE

STYLE :
TEMPO :

A MIN7 D7 G MA7 C7(#11) B MIN7 Bb7

A MIN7 D7 B MIN(b5) E7

A MIN7 C MIN7 F7 B MIN7 E7 Bb MIN7 Eb7

A MIN7 D7 G DIM MA7 Gb

NOM :

Prénom :

ECRIRE UNE GRILLE SOUS CE THEME

System 1: Treble and bass clefs, key signature of three flats, common time signature. The treble staff contains a melodic line with eighth and quarter notes, while the bass staff is empty.

System 2: Treble and bass clefs, key signature of three flats, common time signature. The treble staff contains a melodic line with quarter and eighth notes, while the bass staff is empty.

System 3: Treble and bass clefs, key signature of three flats, common time signature. The treble staff contains a melodic line with eighth notes and slurs, while the bass staff is empty.

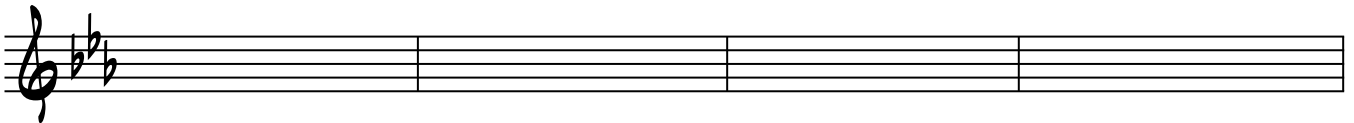
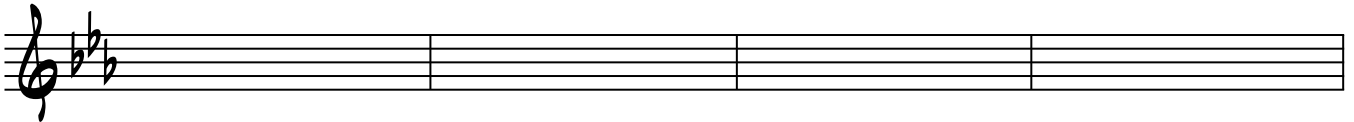
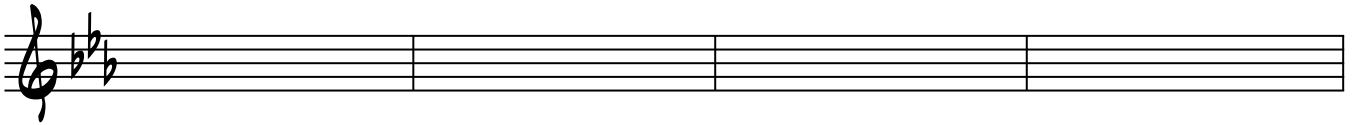
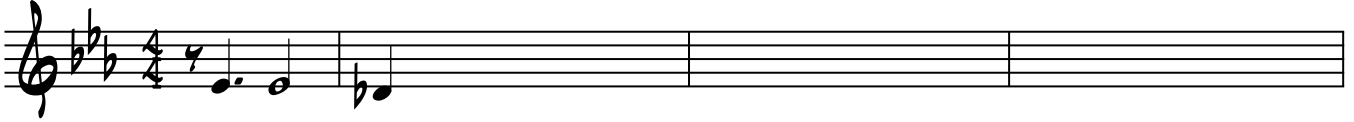
System 4: Treble and bass clefs, key signature of three flats, common time signature. The treble staff contains a melodic line with eighth notes and slurs, while the bass staff is empty.

RELEVEZ LE SOLO DE PIANO ET LA GRILLE HARMONIQUE

NOM :

Prénom :

E^bMIN7 Ab7



B^bMIN7

